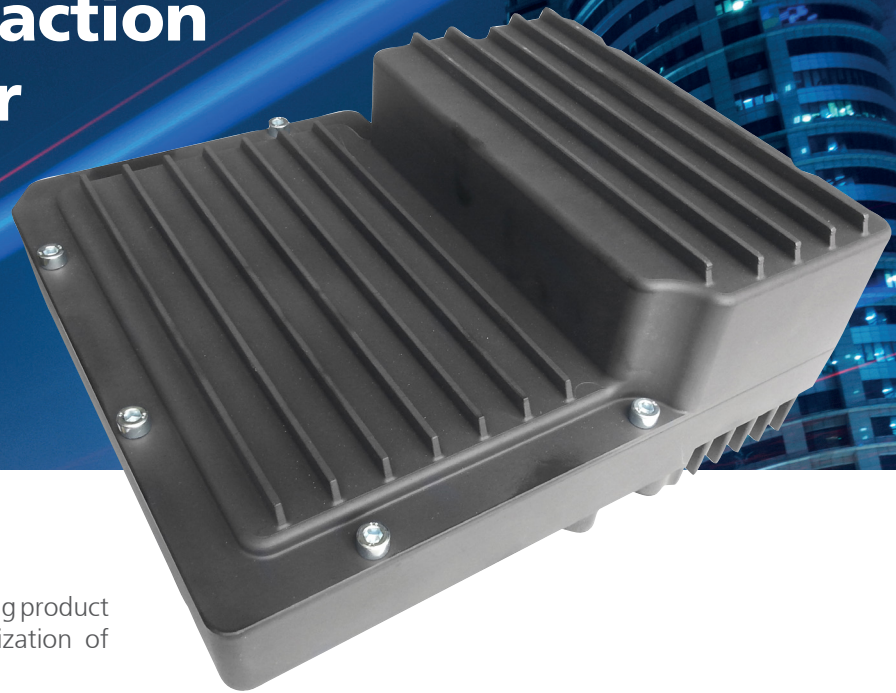


## 48V Brushless Traction Motor Controller



### Customer Approach

We provide a modular concept based on the existing product together with our technical support for optimization of design and process of system integration.

### Features

- All components automotive rated
- Design prepared according to ISO 26262
- System basic chip and dual core micro-controller for safe operation
- Safe external power switch off
- Observation of power components
- Field oriented control
- Adaptive field weakening control

	EV-MC 430/42
Nominal battery voltage	41-49V
Min. operating voltage	31VDC
Max. operating voltage	75VDC
Peak current (2 min)	430Arms
Cont. current (60 min)*	220Arms
Digital inputs/outputs	12 (same configurable for encoder inputs)
Analog inputs	8 (can be configured as digital inputs)
Motor temperature sensor input	3xNTC
Contactor/solenoid outputs	3x (5A) PWM (1-16kHz) current or voltage controlled by two semiconductors in series
Communication interfaces	3x CAN
Dimensions (L x W x H)	226mm x 2014mm x 89mm
Protection class	P66 (except to the side of the motor connection)
Ambient operating temperature	-40°C to +85°C

\*Depending on cooling conditions